



CAPRI II

The sexy European road car imported by Lincoln-Mercury



For as many years as Americans have owned exotic automobiles, European design and craftsmanship have been associated with many of the best. In that tradition of excellence, Lincoln-Mercury has introduced to America . . . Capri II. This 3-door sports coupe of international reputation reveals its European heritage in classic styling and luxury. But beyond visual impressions, this sophisticated road machine's styling is aerodynamically efficient, contributing to the excellent fuel economy. Capri II dimensions are also appropriate for con-

temporary driving . . . the carrying capacity is sensible . . . and the performance exciting. Consider also the German craftsmanship. In climatic extremes from Morocco to Finland, Capri II endured hot and cold fuel-handling tests. In Belgium, it prevailed over punishing tests which simulated the stresses of more than two and a half million kilometers (over a million miles) of consumer driving. And now Lincoln-Mercury invites you to test this extraordinary road car. Capri II. The Europeans knew what they wanted.



Capri II is a road car. It couldn't be otherwise because the Europeans are, to say the very least, enthusiastic about their cars and their driving. Capri II is designed and built to be driven. It is not basic transportation, but much more . . . a fine road car with spirit. It accelerates, handles, and brakes smoothly and predictably. Power front disc brakes, rack-and-pinion steering, four-speed manual transmission, front and rear stabilizer bars, and steel-belted radials are, of course, included at no additional cost. Full instrumentation monitors engine performance. A responsive 2.3 litre OHC 4-cylinder engine is standard, an impressive 2.8 litre OHV V-6 available as an option. And although the ride of a fine road car is often traditionally stiff, even harsh, the Capri II could well surprise you with its remarkably civilized ride. This characteristic is enhanced by liberal utilization of sound insulation and the overall tightness of the car. All these factors bearing on total performance lead again to one premise. The Capri II must be driven to be appreciated.

1. Sensibly powered for balanced acceleration and fuel economy, Capri II is responsive in typical traffic situations. 2. Wide 5½" wheels are cast aluminum to reduce unsprung weight. Standard with Ghia, they're illustrated with 185/70 HRx13 tires from V-6 Option. 3. Capri II's precise performance is an asset in adverse driving conditions. 4. Power front disc brakes resist fade, perform well in the wet.







Here is the basic Capri II . . . a most affordable sexy European. And not only because its sticker price is surprisingly low. Refinements to the 2.3 litre overhead cam engine that included a boost in compression ratio to 9.0:1 and carburetor recalibrations make the Capri II with this standard 4-cylinder engine an MPG car. MPG means miles per gallon and here are the specifics, based on EPA estimates:

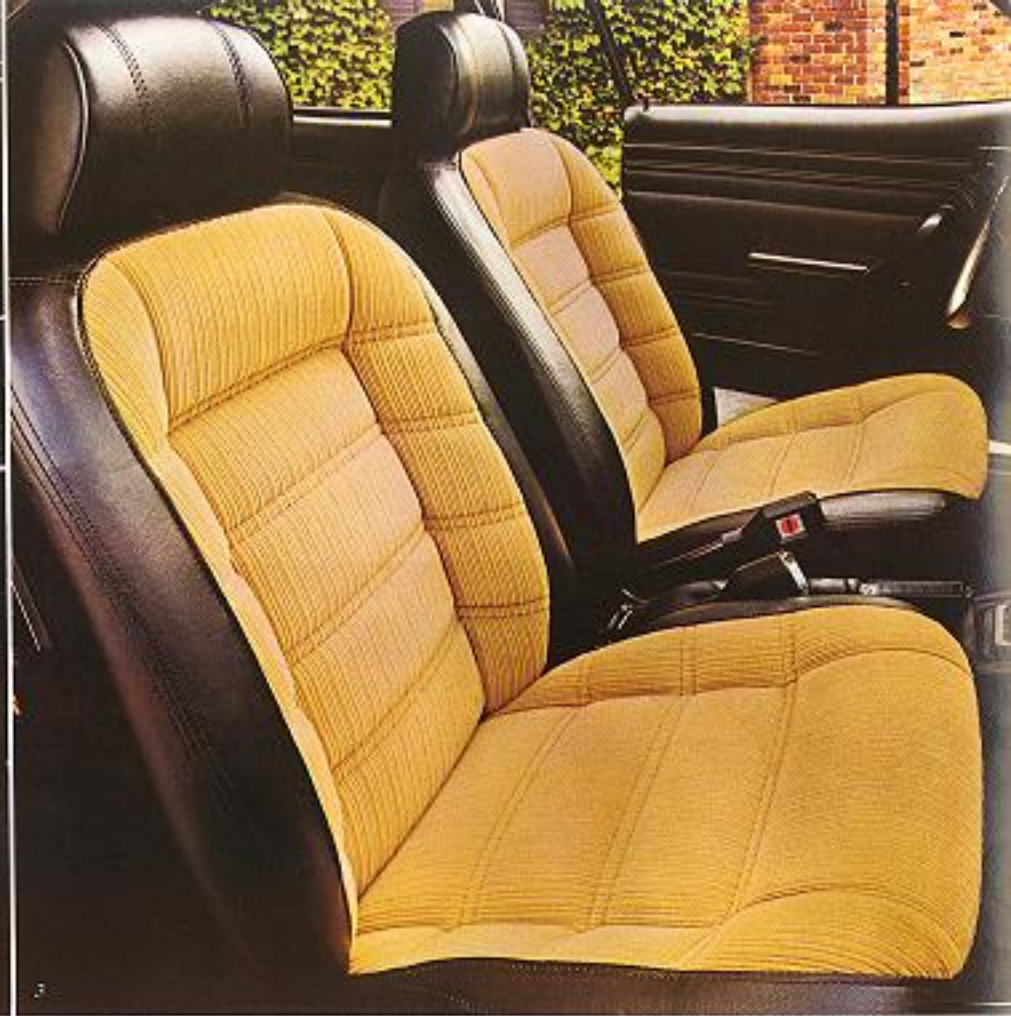
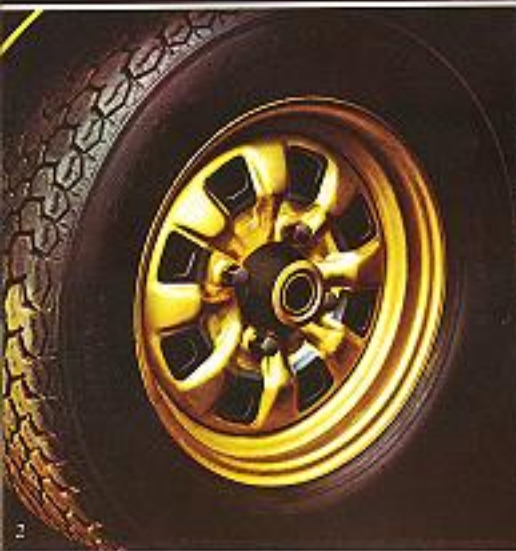
| | 49 States | | California Only | |
|------------------------|-----------|---------|-----------------|---------|
| | City | Highway | City | Highway |
| 4-speed manual | 24 | 34 | 20 | 31 |
| Select-Shift automatic | 22 | 31 | 21 | 32 |

Remember that the actual mileage obtained in use varies with the type of driving, the driver's habits, optional equipment, road and weather conditions, and how the car is maintained.

1. The influence of German craftsmanship is revealed in the precise vinyl upholstery of the reclining front bucket seats. Available interior colors are light tan, dark brown, and black. 2. Rear bench seats, loop-pile carpeting, and interior courtesy light are standard. 3. To create the practicality of a mini-wagon, rear seat back folds neatly forward.



Capri II with V-6 Option. Instrument panel shows optional AM radio.



Flashes of gold on sleek, sinewy black or, if you prefer, starkly dramatic white mark the excitement of the Capri II "S". There is virtually no bright trim . . . gold striping accents the European styling. The gold-on-black theme appears again in either the standard sports road wheels or the optional cast aluminum wheels. And inside, seating surfaces of soft gold luxury cloth contrast with black vinyl trim on both front buckets and individually folding rear seating. Carpeting is black. The instrument panel is black. Lincoln-Mercury's sexiest European is pure Capri II . . . from cat-quick handling and overall performance to excellent fuel economy.

1. Interior mood is established by predominant use of black, but flashes of gold accent steering wheel and instrument panel. Dual racing mirrors are standard. 2. Steel-bellied radials are 165SRx13 size. Along with wide track and heavy-duty suspension, they contribute much to handling and stability. 3. Gold-on-black color theme for front and rear seating matches exterior treatment. Interior noise level is lowered by upgraded sound insulation package.





An intriguing alternative to the base Capri II level of luxury is offered by the Decor Group Option. Bright exhaust extensions and optional color-keyed wide bodyside moldings alter exterior appearance simply, yet significantly. An upgraded sound insulation package reduces road and traffic noise. Seating is upholstered in a distinctive sew pattern of embossed vinyl and features front buckets and an individually contoured, individually folding style of rear seat. Available colors are light tan, dark brown, black, dark brown-and-parchment, and red-and-black. A special console, steering wheel, and beautifully woodtone applied instrument panel are other touches of Decor Group luxury.

1. Distinctively European rear lighting assembly has integrated backup lamp, amber and red signal and stop lights. 2. Opening quarter window is standard with Decor Group and Ghia. 3. Adjustable map light adds functional luxury. 4. The spacious Capri II glovebox opens to tray position, has two cup inserts.

Capri II Decor Group Option with cast aluminum wheels, vinyl roof, wide bodyside molding, racing mirror, and V-6 options.



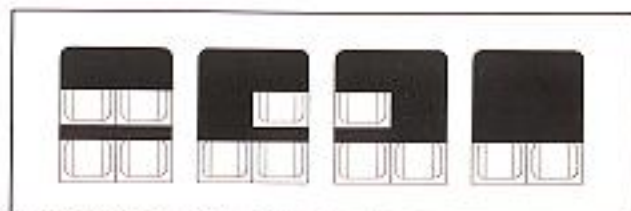




A most luxurious sexy European is the Capri II Ghia. High-back bucket seats. Cast aluminum wheels. Color-keyed wide bodyside molding. All standard. As is an interior equally impressive. Still, even a luxurious European road car should be practical today . . . and the Ghia is. The third door and individually folding rear seats conveniently provide a two, three, or four passenger vehicle with proportionate cargo capacity. Access to the rear is through the counterbalanced third door, which responds to a touch of the push-button lock by lifting with fingertip effort. The load area is flat, at a good height, and

uncompromised by spare tire storage. Changing tools and spare are under the load deck. Metal skid strips facilitate easy movement of cargo in the luxuriously carpeted load area. For a small car, Capri II's carrying capacity is considerable. Capability is 644.1 litres (22.6 cu. ft.) with both rear seats down.

1. Capri II Ghia rear seats are individually contoured . . . and the backs can be raised or lowered singly or in combination, as shown in the drawing below. 2. Typical of Ghia luxury, the cut-pile carpeting extends to the seat backs, console, and lower doors.



Versatile Ghia interior handles four, three, or two passengers.





The balance of function and comfort inside Capri II Ghia is precise. Luxurious high-back bucket seats, in light tan, black, or red-and-black, adjust to a wide variety of driving positions and recline fully as well. They're carefully covered in soft, smooth, luxury cloth, or, if you prefer, a handsome knit vinyl. The steering wheel is covered in leather. Understandably, the dimensional relationship between seating, steering wheel, gear-shift (optional Select-Shift automatic transmission shown), foot pedals and the impressive array of gauges, switches, and controls is excellent. To the rear, at the sides of the third door,

large extraction vents change the air more than twice each minute. Before you road test the Ghia—or any other Capri II—allow enough time to familiarize yourself with the interior elements. European design and craftsmanship deserve an intensive appraisal.

1. Ribbed in texture and appearance, luxurious upholstery cloth is nylon-based for durability. 2. Full console incorporates clock and deep storage compartment. 3. Restraint system belts retract into side trim panels behind the front doors. 4. Large map pockets in the front seat backs are typical of the Ghia's luxurious trim. A map light, cut-pile carpeting, and assist handles are also standard.

Gauges on either side of speedometer/odometer and tachometer take charging, oil pressure, fuel, and temperature readings.

High beam, turn signal, ignition warning, and brake warning indicator lights are between and under speedometer and tachometer.



Hazard flasher light and switch, hood release are at extreme lower left. Parking and headlight switches above them.

Lever on steering column left incorporates turn indicator, high/low headlight beam switch, and dual-note horn control.

Ignition and optional rear window wiper/washer switches are to lower right of steering column. Just above, low and high speed windshield wiper switches. Washer switch is foot-operated on left.

Left of controls for optional AM/FM radio and air conditioning are instrument panel light dimmer switch, fasten seat belt indicator light, and control/indicator light for optional electric rear window defroster.

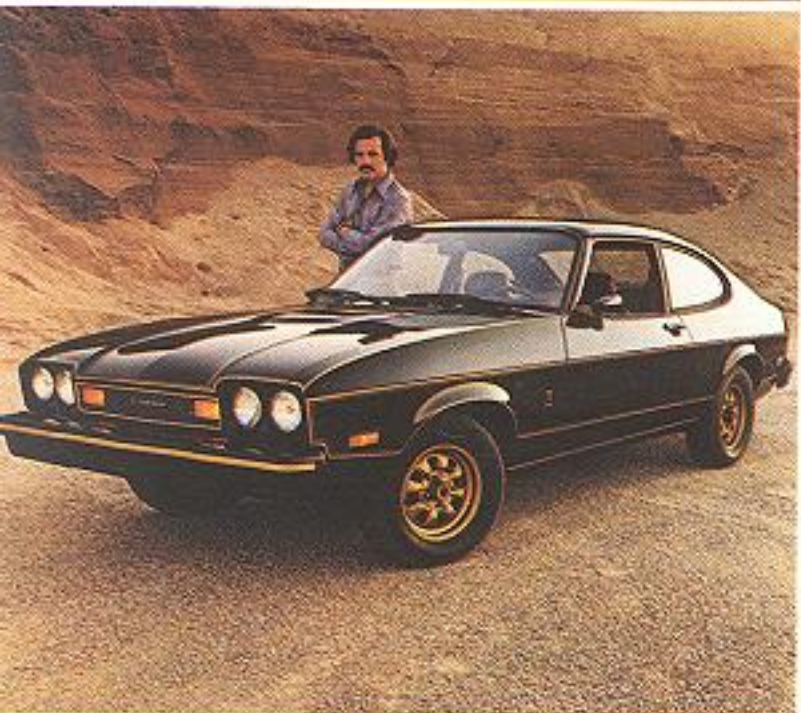


Standard Features

CAPRI II

- 2.3 litre OHC 4-cylinder engine
- 4-speed manual transmission
- Power-assisted front disc brakes
- 165SRx13 steel-belted radials
- Styled steel wheels
- Rack-and-pinion steering
- Stabilizer bars, front and rear
- High-output heater
- Flow-Thru power ventilation
- Full instrumentation
- Color-keyed hi-flex bumpers
- Reclining front bucket seats
- Fold-down rear bench seat
- Loop-pile carpeting throughout
- Cigar lighter with one front, two rear ashtrays
- Inside hood release
- Day/night interior mirror
- Courtesy light
- Protective bodyside molding
- Solid-state ignition

More information and illustrations on pages 6 and 7. Also, see pages 18 and 19 for specifications.



CAPRI II "S"

Includes all Capri II standard features (listed above) with the following additions and changes:

- Black or white exterior with gold striping
- Gold finish styled steel wheels
- Dual racing mirrors
- Heavy-duty suspension
- Gold luxury cloth seating surfaces with black vinyl trim
- Individual contoured rear seats with individually folding backs
- Black instrument panel, steering wheel, carpeting, and other interior trim
- Upgraded sound package

More information and illustrations on pages 8 and 9. Also, see pages 18 and 19 for specifications.



CAPRI II DECOR GROUP OPTION

Includes all Capri II standard features with the following additions and changes:

- Embossed vinyl seating surfaces and trim panels
- Individual contoured rear seats with individually folding backs
- Console
- Adjustable map light
- Woodtone applied instrument panel
- Special molded vinyl steering wheel rim
- Loop-pile carpeting on lower doors
- Opening quarter window
- Glovebox light and lock
- Assist handles front and rear on headliner
- Upgraded sound insulation package
- Bright exhaust extension
- Dual-note horn

More information and illustrations on pages 10 and 11. Also, see pages 18 and 19 for specifications.



CAPRI II GHIA

Includes all Capri II standard features with the following additions and changes:

- High-back luxury seats upholstered in cloth or knit vinyl
- Adjustable headrests
- Full console with storage compartment
- Map pockets in seat backs
- Individual contoured luxury rear seats with folding backs
- Rear seat armrests
- Clock
- Woodtone applied instrument panel
- Leather-wrapped steering wheel
- Instrument panel grab handle
- Assist handles front and rear on headliner
- Glovebox light and lock
- Cut-pile carpeting on load floor, rear seat backs, and lower doors
- Load floor skid strips
- 5 1/2" cast aluminum wheels
- Color-keyed matched racing mirrors (remote control for driver's side)
- Color-keyed wide bodyside molding
- Bright exhaust extension
- Opening quarter window
- Upgraded sound insulation package
- Luggage compartment lights
- Dual-note horn

More information and illustrations on pages 12 through 15. Also, see pages 18 and 19 for specifications.

Optional Features

Personalizing this car is relatively simple. Once preference has been established for the Capri II, Capri II "S", Capri II Decor Group Option, or Capri II Ghia, it is necessary to choose an appropriate level of performance. The sportier, more powerful 2.8 litre OHV V-6 offers an alternative to the standard 2.3 litre OHC 4-cylinder engine. Any Capri II is an exceptionally well-equipped car. Nevertheless, there are available several important, perhaps unexpected, options.

1. On a Capri II, a sunroof is more than a sunroof. Shown here in combination with the vinyl roof option, its smooth manual operation admits fresh air and sunshine. 2. In addition, it can be tilted up at the rear for improved ventilation. 3. AM/FM radio, and controls for air conditioning. 4. The AM radio features push-button tuning. Standard heater control panel can be seen just below. 5. Tonneau-style vinyl luggage cover accommodates belongings best kept out of sight in rear load area. 6. Depending on climate, an electric rear window defroster could be important. 7. Addition of washer and wiper helps eliminate visibility problems to the rear in bad weather. 8. Select-Shift automatic transmission is shown here in standard Ghia console.

Full tinted glass (mandatory with air conditioning), power steering, driver's side remote control racing mirror, and 5½" cast aluminum wheels (mirror and wheels standard on Ghia) complete the limited selection of Capri II options.

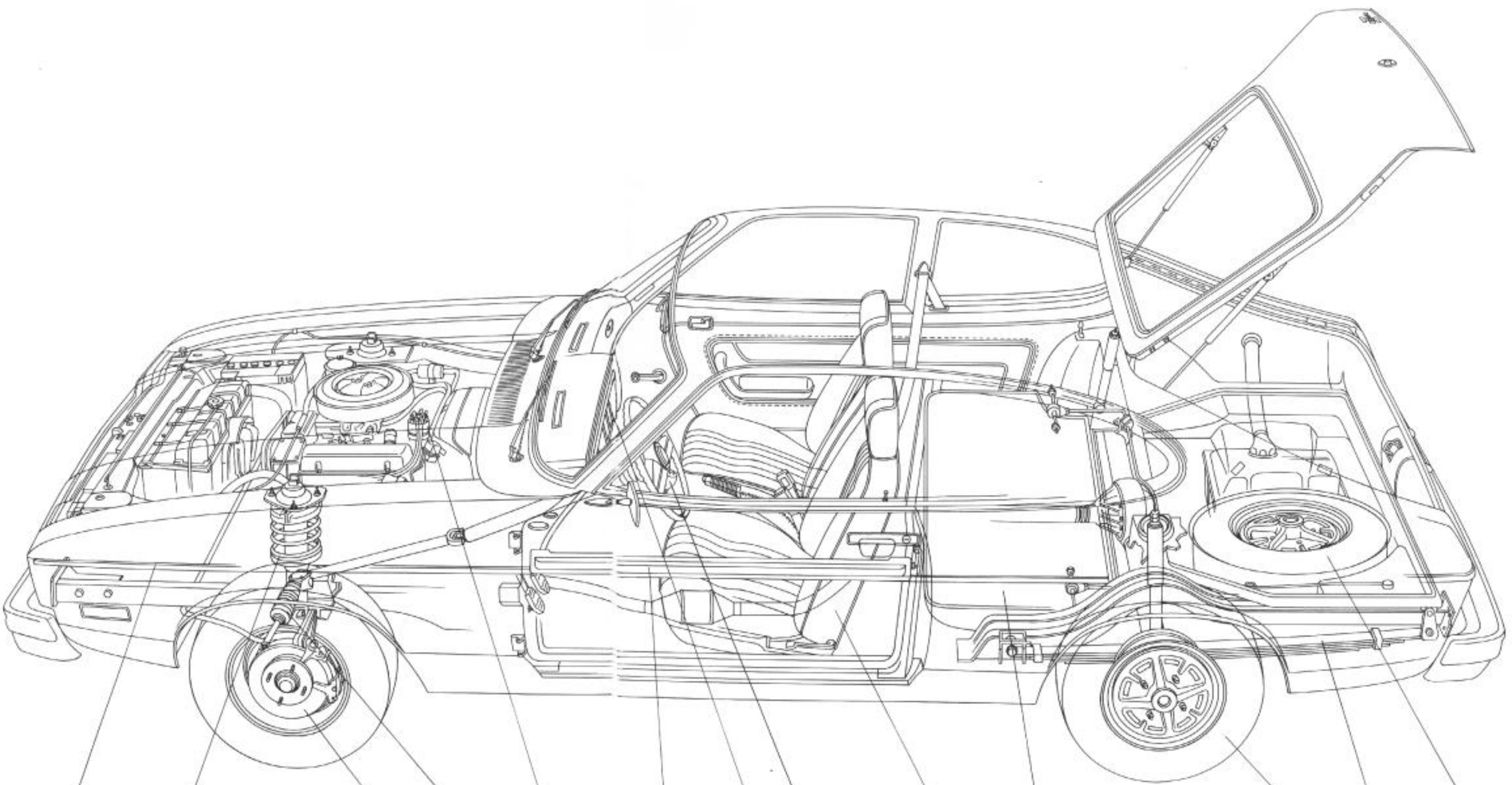
CAPRI II V-6 OPTION

Available with Capri II, Capri II "S", Capri II Decor Group Option, and Capri II Ghia. Includes all standard features for model selected with the following additions and changes:

- 2.8 litre OHV 6-cylinder engine
- Heavy-duty 4-speed manual transmission
- Larger clutch
- Larger brakes
- 185/70 HRx13 steel-belted radials
- Dual exhaust system
- Larger capacity cooling system

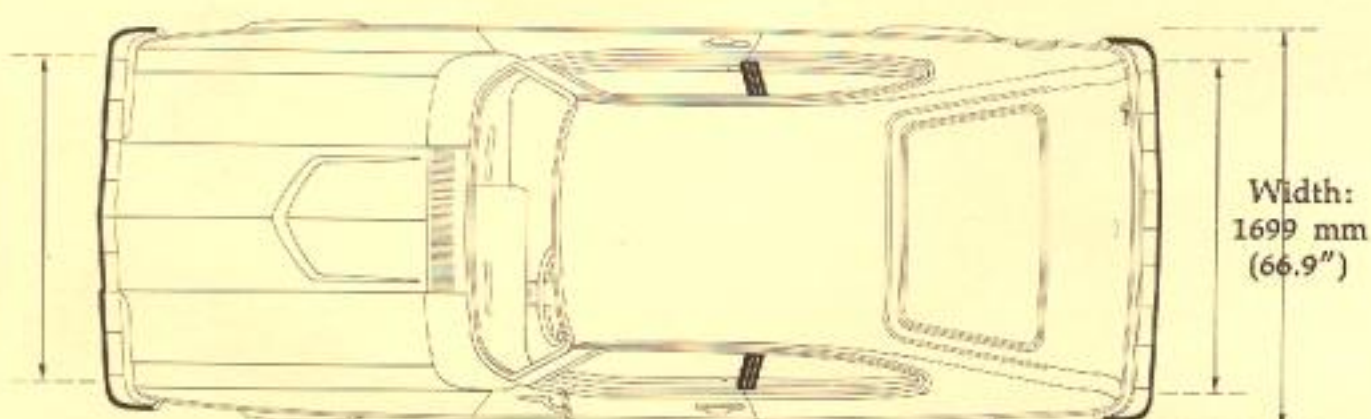
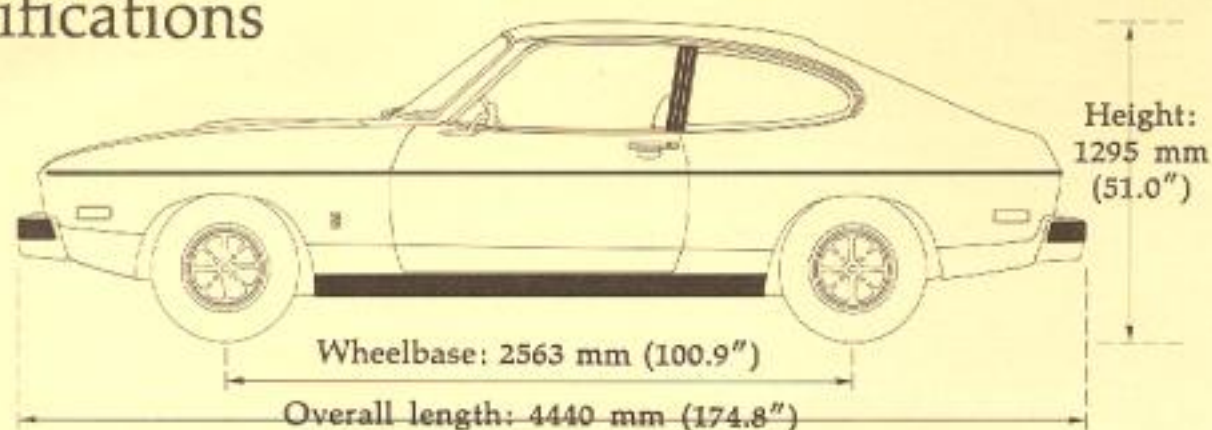
See pages 18 and 19 for specifications and engine data.





- Protective bodyside molding.
- Coil-spring MacPherson strut independent front suspension with stabilizer bar.
- Rack-and-pinion steering.
- Power front disc brakes.
- Solid-state ignition.
- Steel guard rail.
- Full instrumentation.
- 4-speed manual transmission.
- Fully reclining bucket seats.
- Fold-down rear seat.
- Steel-belted radials on styled steel wheels.
- Semi-elliptic four-leaf spring Hotchkiss rear suspension with staggered shocks and stabilizer bar.
- Spare tire storage under rear deck.

Specifications



Front Track: 1354 mm (53.3")

Rear Track: 1384 mm (54.5")

Luggage Capacity, rear seat up: 210.9 litres (7.4 cu. ft.). Luggage Capacity, rear seat down: 644.1 litres (22.6 cu. ft.). Fuel Tank Capacity: 48.1 litres (12.7 gal.). Approximate Curb Weight: ranges from 1174 kg (2591 lbs.) for Base Capri II with no options to 1379 kg (2996 lbs.) for Capri II Ghia with all options, including V-6.

| ENGINE DATA | 4 CYLINDER | 6 CYLINDER | | | |
|---------------------------------------|--|--|--------|--------|--------|
| Engine Type | OHC In-Line | OHV 60° Vee | | | |
| Displacement | 2.3 litres (140.0 cu. in.) | 2.8 litres (170.8 cu. in.) | | | |
| Bore x Stroke | 96.0 x 79.5 mm (3.78 x 3.13") | 93.0 x 68.6 mm (3.66 x 2.70") | | | |
| Compression | 9.0:1 | 8.2:1 | | | |
| Ignition | Solid-State | Solid-State | | | |
| Carburetor | Holley-Weber | Motorcraft 2150 | | | |
| Alternator | 35 amp.** | 35 amp.** | | | |
| Cooling System | 7.2 litres (7.6 qt.) | 7.8 litres (8.2 qt.) | | | |
| Battery | 55 amp.-hr.* | 55 amp.-hr. | | | |
| Exhaust System | Single | Dual | | | |
| Rear Axle Ratio | 3.44:1 | 3.09:1† | | | |
| Tires—Steel-Belted Radial Ply | 165SRx13 | 185/70 HRx13 | | | |
| Power Brakes—Front Disc —Rear Drum | 244.6 mm (9.63") 228.6 x 44.5 mm (9 x 1.75") | 247.7 mm (9.75") 228.6 x 57.2 mm (9 x 2.25") | | | |
| Clutch | 215.9 mm (8.5") | 241.3 mm (9.5") | | | |
| Manual Transmission Gear Ratios | 1st | 2nd | 3rd | 4th | Rev. |
| 4 Cylinder | 3.65:1 | 1.97:1 | 1.37:1 | 1.00:1 | 3.66:1 |
| 6 Cylinder | 3.36:1 | 1.81:1 | 1.26:1 | 1.00:1 | 3.37:1 |

*66 amp.-hr. with automatic transmission. **55 amp. with air conditioning. †3.22 in Calif.

COLOR CHOICES

Exterior colors are white, black, dark red, yellow, orange, dark brown and metallic shades of silver, blue, and green. For the interior, dark brown, black, light tan, red-and-black, and dark brown-and-parchment are available, depending on exterior color choice. The optional vinyl roof is either black, dark brown, or white, again based on selection of the exterior/interior color combination.

MAINTENANCE

Technological advances such as solid-state ignition render Capri II an economical car to maintain.

Under normal conditions, the Capri II is scheduled for an oil change only once in 8045 kilometers (5000 miles). After an initial scheduled change at 8045 kilometers, the oil filter is scheduled to be replaced every 16,090 kilometers (10,000 miles). A definite advantage over conventional systems, solid-state ignition prolongs spark plug life and eliminates points and condenser replacements. Lubrication is scheduled for 48,270 kilometers (30,000 miles).

For continued top performance be sure to specify genuine Motorcraft parts and Autolite Spark Plugs whenever replacement is necessary.

Functional Features

Ford Motor Company Lifeguard Design Safety Features

OCCUPANT PROTECTION

- Safety-designed front end and roof structure.
- Double-yoke safety latches and hinges plus steel guard rails in side doors.
- Integral lap and shoulder belts with single retractor continuous loop belts and positive reminder warning light/buzzer for front seat occupants. Lap belts with mini-buckles and retractors for rear seating positions.
- Energy-absorbing steering column and wheel.
- Energy-absorbing armrests and safety-designed door handles.
- Energy-absorbing instrument panel with padding for right front passenger.
- Safety glovebox latch.
- Padded sun visors. Safety-designed coat hooks.
- Self-locking front seat backs with head restraints and padded energy-absorbing tops.
- Safety-designed radio control knobs and push buttons on cars with radios.
- Impact-absorbing laminated safety glass windshield with inside yield-away rearview mirror.
- Flame-resistant interior materials.

OPERATING SAFETY

- Safety rim wheels and load-rated tires. Dual hydraulic brake system with warning light and corrosion-resistant lines.
- Parking lights coupled with headlamps. Back-up and side marker lights. Hazard warning flasher. Turn indicators with lane-changing signal feature.
- Two-speed windshield wipers with washers.
- Outside rearview mirror, driver's side.
- Glare-reduced instrument panel padding, steering wheel hub, windshield wiper arms and windshield pillars.
- Uniform transmission shift quadrant on cars with automatic transmissions.
- Continuously variable intensity illuminated controls for wiper/washer, defrost/defog, and climate control.
- Safety hood latch system.

ANTI-THEFT

- Locking steering column with warning buzzer.
- Non-reversing odometer.
- Visible vehicle identification number.

| GAS MILEAGE RATINGS | 49- States | | California Only | |
|---------------------|---------------|--|--------------------|--|
| | City Hwy. | | City Hwy. | |

2.3 litre 4-cylinder

| | | | | |
|------------------------|----|----|----|----|
| 4-speed manual | 24 | 34 | 20 | 31 |
| Select-Shift automatic | 22 | 31 | 21 | 32 |

2.8-litre V-6

| | | | | |
|------------------------|----|----|----|----|
| 4-speed manual | 18 | 28 | 16 | 27 |
| Select-Shift automatic | 18 | 25 | 17 | 23 |

All fuel economy numbers are estimates based on EPA tests. Remember that the actual mileage obtained in use varies with the type of driving, the driver's habits, optional equipment, road and weather conditions, and how the car is maintained.

Information shown here was correct when approved for printing. Lincoln-Mercury Division reserves the right to discontinue or change specifications or designs at any time, without incurring any obligations. Some features shown or described are optional equipment items which are available at extra charge. Some options are required in combination with other options.