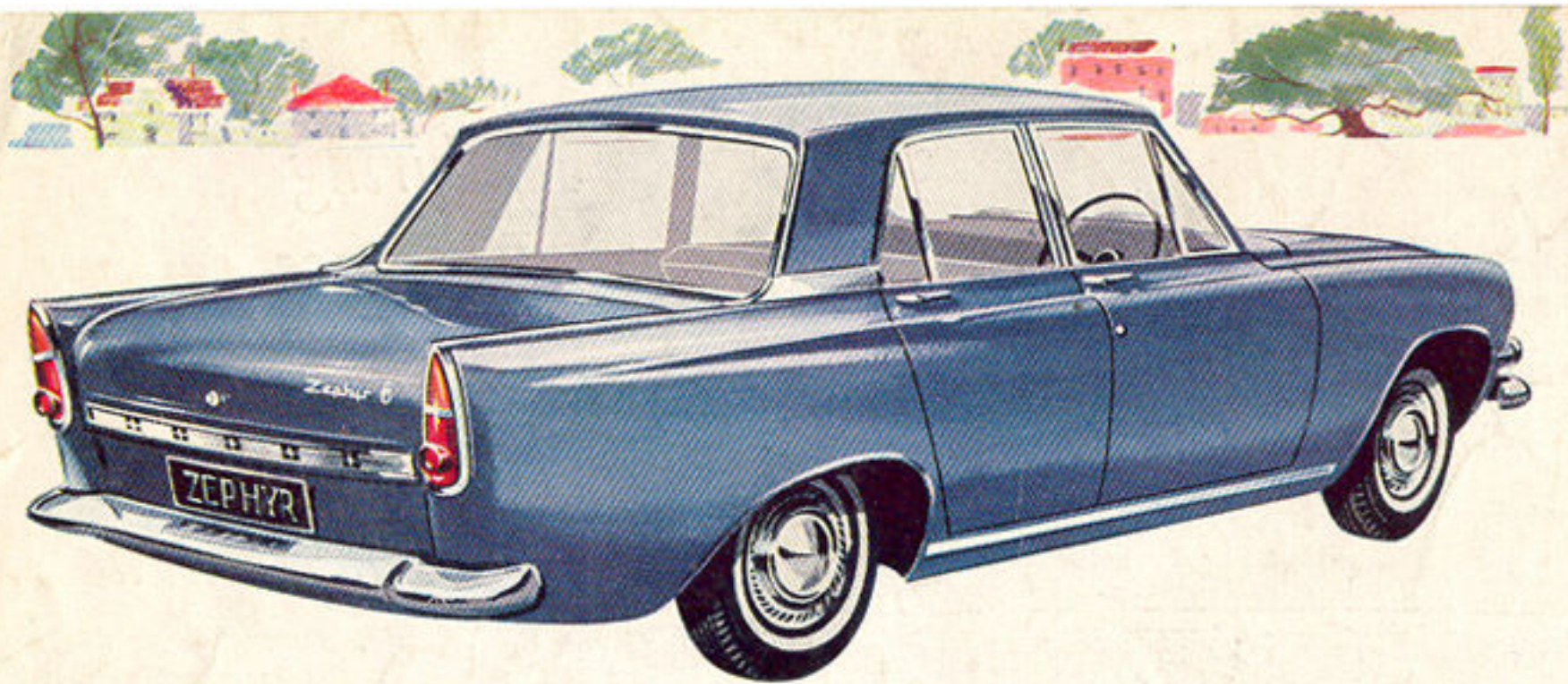




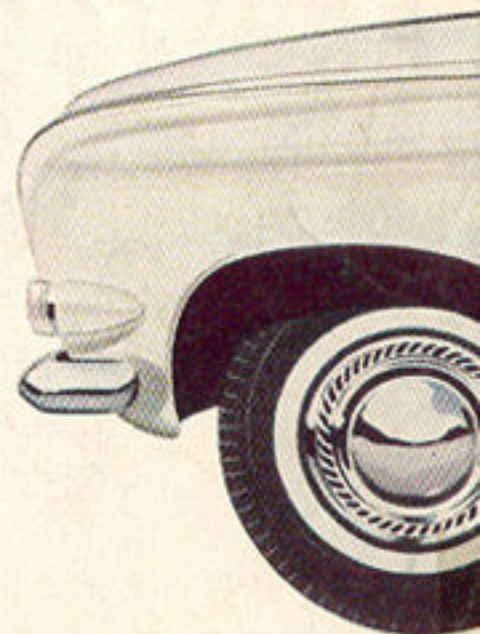
*Enduring
Elegance
with
Powered
Performance...*

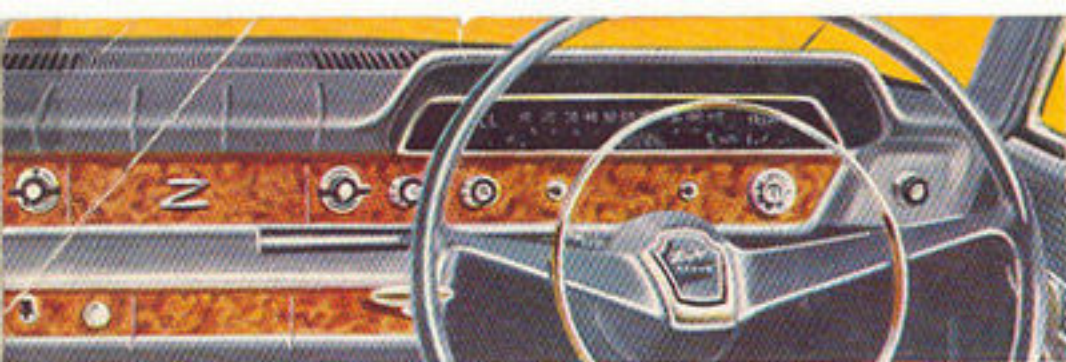


...the **BIG ZEPHYR 6**

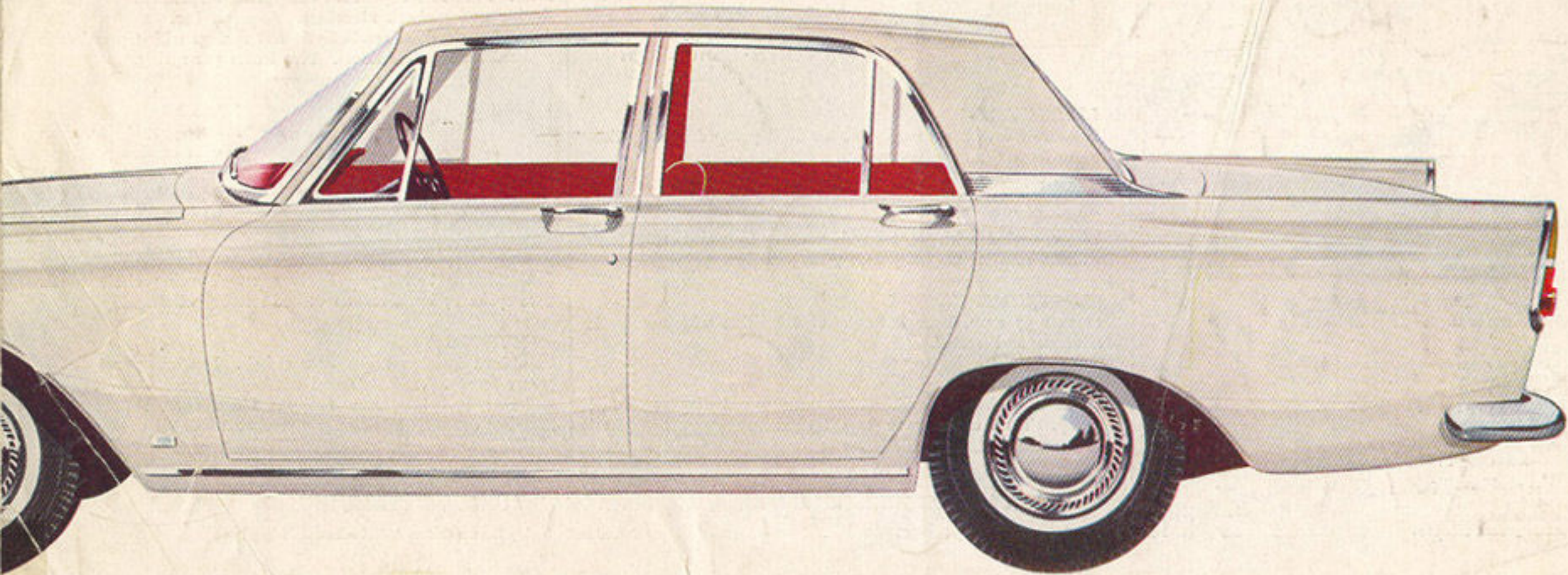
The performance that puts you way out ahead. You feel it the very first time you take out your new Zephyr; eager thrusting power that promises (and sustains) superb performance. Acceleration and cruising speed are both excellent; you reach 60 mph from a standing start in 15.6 seconds, effortlessly reach 94 mph. Its immensely powerful 106 bhp responds supremely to good conditions and bad. Long driving or stiff gradients

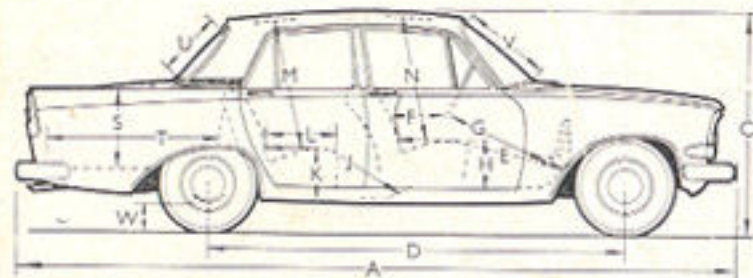
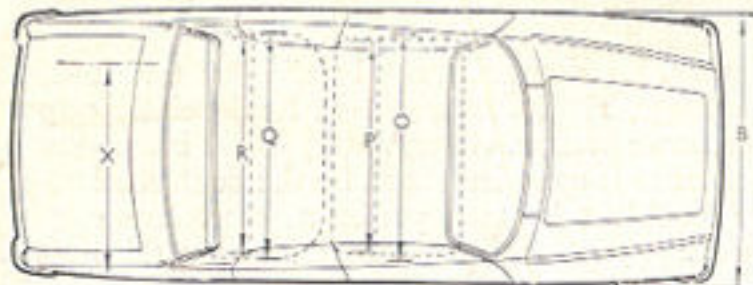
won't discourage it. Six passengers can lean back in comfort on deep, foam-filled cushions. Stretch their legs. Enjoy the view. Talk amiably (the Zephyr Six purrs in a well-bred undertone). Children are welcome too—the tough pvc surfaces (or real leather, optional extra) wipe clean, stand up to scuffs and scratches. This is the new Zephyr Six. Move far, move fast—arrive refreshed.





Relish how skilled driving becomes a pleasure. Excellent all-round visibility; a slick positive fully synchromesh 4-speed gear change, responsive controls. Recirculatory ball steering makes the wheel lighter, firmer, more precise. Clear, well-grouped instruments are easy to read at a glance. Performance is complemented by the controlled safety of front wheel disc brakes. You're confident because you're at ease. Every practical detail has been attended to—leaving you free to concentrate on the skills of the road. At the wheel of the new Zephyr Six motoring becomes magnificent.



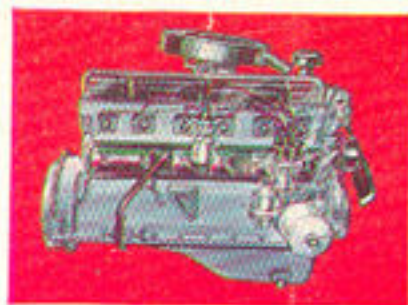


| | | | | | | |
|---|--|-----|-----|-----|---------|-------------|
| A | Overall length | ... | ... | ... | 180.35" | (458.1 cm.) |
| B | Maximum overall width | ... | ... | ... | 68.96" | (175.2 cm.) |
| C | Overall height (laden) | ... | ... | ... | 55.5" | (140.8 cm.) |
| | Overall height (unladen) | ... | ... | ... | 57.5" | (146.1 cm.) |
| D | Wheelbase | ... | ... | ... | 107.0" | (271.8 cm.) |
| E | Leg room (free) (or, with seat uncompressed) | ... | ... | ... | 43.7" | (111.0 cm.) |
| F | Steering wheel to seat back | ... | ... | ... | 12.31" | (31.3 cm.) |
| G | Steering to brake pedal | ... | ... | ... | 26.10" | (66.3 cm.) |
| H | Cushion height to carpet | ... | ... | ... | 11.02" | (28.0 cm.) |
| J | Leg room (free) (or, with seat uncompressed) | ... | ... | ... | 38.40" | (97.5 cm.) |
| K | Cushion height to carpet | ... | ... | ... | 13.07" | (33.2 cm.) |
| L | Cushion depth | ... | ... | ... | 18.0" | (45.7 cm.) |
| M | Head room (uncompressed cushion) | ... | ... | ... | 34.15" | (86.7 cm.) |
| | Effective head room (compressed cushion) | ... | ... | ... | 37.75" | (95.9 cm.) |
| N | Head room (uncompressed cushion) | ... | ... | ... | 33.50" | (85.1 cm.) |
| | Effective head room (compressed cushion) | ... | ... | ... | 37.57" | (95.4 cm.) |
| O | Hip room (to trim panels) | ... | ... | ... | 58.0" | (147.3 cm.) |
| P | Shoulder room | ... | ... | ... | 54.5" | (138.4 cm.) |
| Q | Hip room (to trim panels) | ... | ... | ... | 58.0" | (147.3 cm.) |
| R | Shoulder room | ... | ... | ... | 56.5" | (143.5 cm.) |
| S | Height—inside | ... | ... | ... | 19.5" | (49.5 cm.) |
| T | Length | ... | ... | ... | 44.0" | (111.8 cm.) |
| X | Width at floor, to spare wheel | ... | ... | ... | 53.0" | (134.8 cm.) |
| U | Back window height | ... | ... | ... | 17.88" | (45.4 cm.) |
| V | Windshield height | ... | ... | ... | 22.6" | (57.4 cm.) |
| W | Rear axle ground clearance | ... | ... | ... | 6.8" | (17.3 cm.) |

SPECIFICATION

ENGINE

6 cylinder in line O.H.V.
Capacity 2553 c.c.
(155.8 cu. ins.).
Bore 82.55 mm. (3.25 ins.).
Stroke 79.5 mm. (3.13 ins.).
Maximum Gross B.H.P.
106 b.h.p. at 4750 r.p.m.
Maximum Gross Torque
139 lbs. ft. at 2100 r.p.m.
Compression ratio 8.3:1
(7:1 optional).



LUBRICATION

Pressure fed with externally mounted oil pump driven by skew gears from the camshaft.
Sump capacity 7 pints plus 1½ pints in filter.

COOLING SYSTEM

Water cooled with centrifugal pump. Capacity 19.3 pints without heater. Capacity 21.0 pints with heater.

ELECTRICAL SYSTEM

12 volt 57 amp. hour battery. Coil ignition with automatic advance and retard.

FUEL SYSTEM

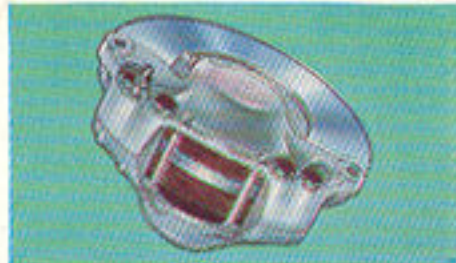
Single downdraught carburettor. Mechanical diaphragm fuel pump. Tank capacity 12 imperial gallons.

TRANSMISSION

Four forward speeds and reverse with blocker type synchromesh on 1st, 2nd, 3rd and 4th.
Lubricant capacity 2.5 pints.
Single dry plate clutch hydraulically operated.

SUSPENSION

Front. Built in independent coil spring suspension. Hydraulic double acting shock absorbers. Anti-roll bar.
Rear. Longitudinal semi-elliptic leaf springs with tapered ends and rubber interleaf liners. Five leaves per spring.



BRAKES

Front 9½ × ½ ins. discs with bonded pads.
Rear Drum type 9 × 2½ ins. one leading and one trailing shoe per drum.

STEERING

Recirculating ball type. Ratio 20:1. Turning circle 30 ft. Two spoke 17 ins. diameter dished steering wheel.

CONTROLS

Combined ignition and starter switch. Heater control (when heater fitted). Variable speed windshield wiper control. Turn indicator and headlamp flasher. Horn control (full ring). Lighting control. Headlamp dipswitch mounted on floor.

Ford Policy is one of continuous improvement. The right to change specifications, colours or equipment at any time without notice is reserved

PUBLISHED BY CAR AND TRUCK EXPORT DIVISION, FORD MOTOR COMPANY LIMITED, DAGENHAM, ENGLAND

Ref. No. MZCO15905-P.213-C.

Printed in England by Benrose & Sons Ltd., London and Derby

