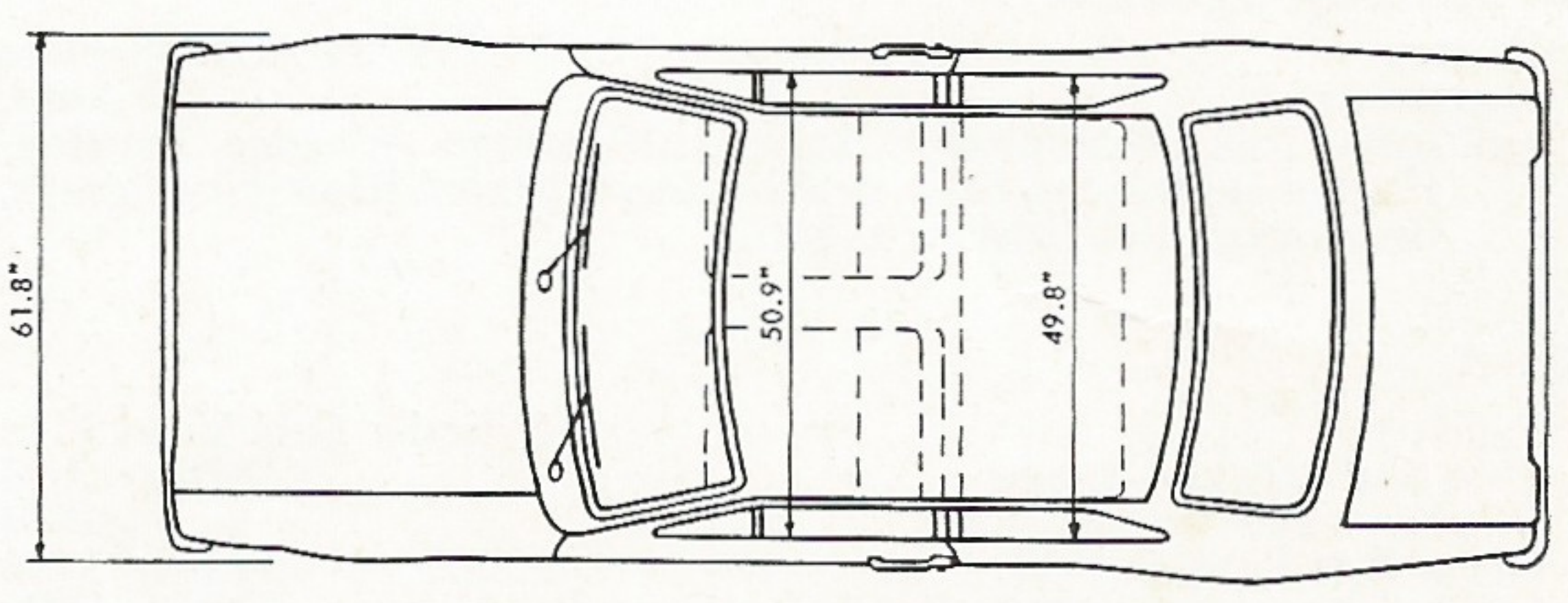
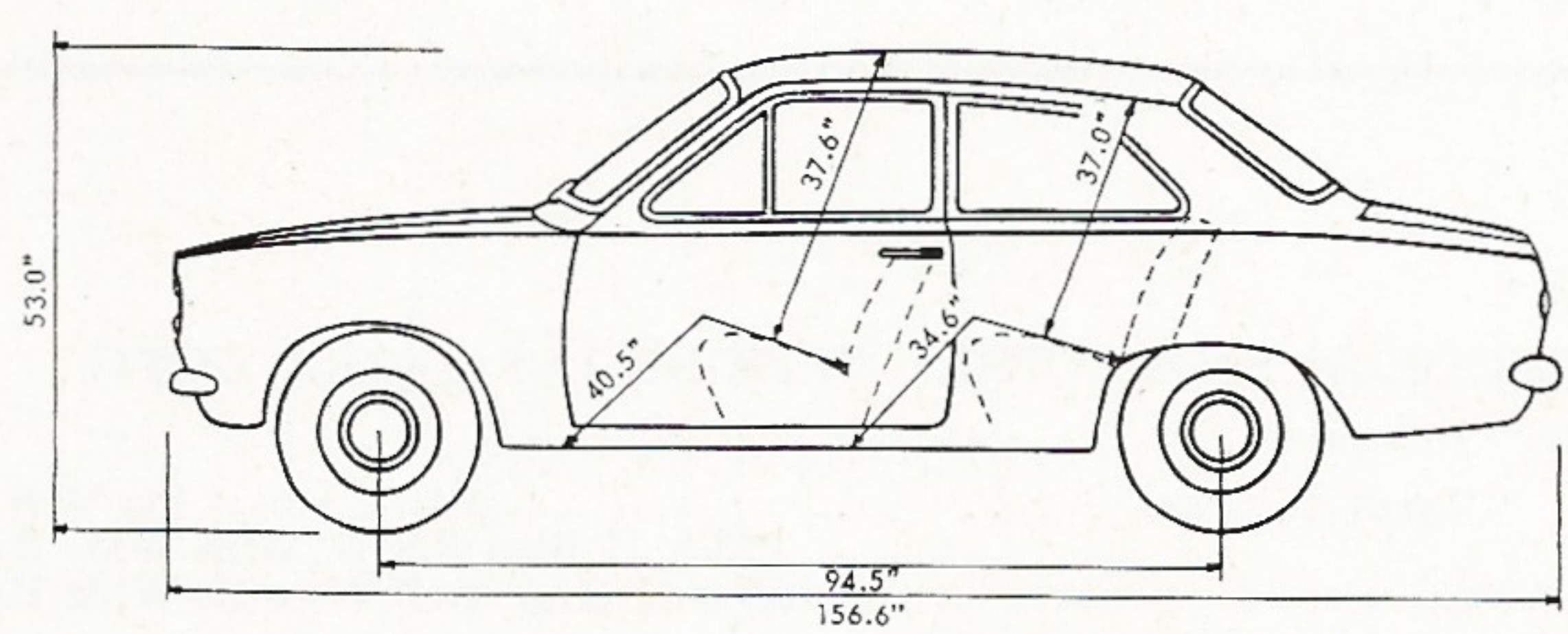


ESCORT 1100 SEDAN



FORD MOTOR COMPANY OF SOUTH AFRICA (PTY.) LIMITED

ESCORT 1100 SEDAN

SPECIFICATIONS

KERB WEIGHT (APPROX.) LBS.	FRONT 879	REAR 752.6	TOTAL 1631.6
G.V.W. 2546	PAYLOAD 914.4		

AXLE, FRONT

Type .. McPherson, Independent Coil Springs, Mounted on Hydraulic Double Acting Shock Absorbers, Track Control Arms and Compression Tie Bars.

AXLE, REAR

Type Hypoid Semi-Floating—Pressed Steel Banjo
Ratio 3.9:1
Capacity—Pints 1.5

BRAKES, SERVICE

Type Dual Line Hydraulic, Visual Master Cylinder
Front .. Drum—Internal Expanding, Two Leading Shoe, Dual Cylinder Girling.
Rear .. Drum—Internal Expanding, Single Leading Shoe, Single Cylinder Girling.
Front Brakes—(Drum Diam. x Lining Width)—inches 8.0 x 1.50
Rear Brakes—(Drum Diam. x Lining Width)—inches 8.0 x 1.50
Total Area (Lining)—sq. inches 75.44

BRAKES, PARKING

Type Mechanical Cable Operated on Rear Wheels

BUMPERS

Front Chrome, Full Width
Rear Chrome, Full Width

CLUTCH

Type .. Cable Operated, Semi-centrifugal, Single Dry Plate, Diaphragm Spring.
Diameter—inches 6.5
Total Frictional Area—sq. inches 34.56
Release Bearing Pre-Lubricated

COOLING SYSTEM

Capacity—Pints (without Heater) .. 7.9
Radiator .. Fin and Tube Pressure Cap
Fan—No. of Blades—Diameter inches .. 10—12.0
Capacity—Pints (with Heater) .. 9.0

DRIVE LINE

Type Hotchkiss
Propellor Shaft No. 1
Universal Joints Needle Roller

ELECTRICAL SYSTEM

Battery 12v. 38 A.H. 54 Plate
Generator 22 Amp.
Ignition—Coil, Distributor, Mechanical/Vacuum Advance, Parking/Flasher Indicators, Stop/Brake Lamps, Sealed Beam Headlamps, Instrument and Interior Lights.

ENGINE

Type 4 Cylinder O.H.V. In Line
Bore and Stroke—inches 3.1878 x 2.098
Displacement—inches (c.c.) 67.0 (1098)
Gross B.H.P. @ R.P.M. 53.0 @ 5500
Gross Torque @ R.P.M. (lbs./ft.) 62.0 @ 3000
Compression Ratio 9.0 : 1
Licensing Horse Power 16.26

FUEL SYSTEM

Fuel Pump Mechanical
Carburettor Single Venturi—Down Draught
Choke Hand, Cable Operated
Fuel Filter Gauze Screen in Pump
Air Cleaner Dry Paper Element
Tank Capacity—Gallons 9.0

LUBRICATION

Engine: Full Pressure Feed to Main, Big End and Camshaft Bearings
Crankcase Capacity—Pints (with Filter) .. 6.4
Oil Filter Renewable Element—Full Flow

SHOCK ABSORBERS

Front Hydraulic Double Acting Telescopic
Rear Hydraulic Double Acting Telescopic

SPRINGS

Front Helical Coil
Rear Longitudinal Leaf—Semi-Elliptic

STEERING

Type Rack and Pinion
Ratio 16.5:1
Steering Wheel—Diameter inches .. 15.0
No. Wheel Turns Lock to Lock .. 2.81/2.95
Turning Circle (Kerb to Kerb)—Feet .. 29.0
Capacity—Pints 0.25

TRANSMISSION

Type .. 4 Speed Synchromesh Remote Centre Floor Gear Shift
Synchromesh All Forward Gears
Gear Positions .. First Second Third Fourth Reverse
Ratios .. 3.656 2.185 1.425 1.000 4.235
Capacity—Pints 1.5

WHEELS

Type Steel Disc, Wide Base Rims
Rim Size 12.0 x 3.5 C

TYRES

Standard Tubeless 5.50 x 12—4 Ply B.S.W.

REGULAR PRODUCTION OPTIONS (AT EXTRA COST)

Heater
Tyres Tubeless 5.50 x 12—4 Ply W.S.W.
155 x 12 Rad B.S.W. with Wide Rims
155 x 12 Rad. W.S.W. with Wide Rims
Seat Belts—Front—Diagonal (Colour Keyed)

These specifications were in effect at the time this leaflet was approved for printing. Ford Motor Company of South Africa (Pty.) Limited, whose policy is one of continuous improvement, reserve the right, however, to discontinue or change at any time, specifications, design or prices, without notice and without incurring any obligation to purchasers.

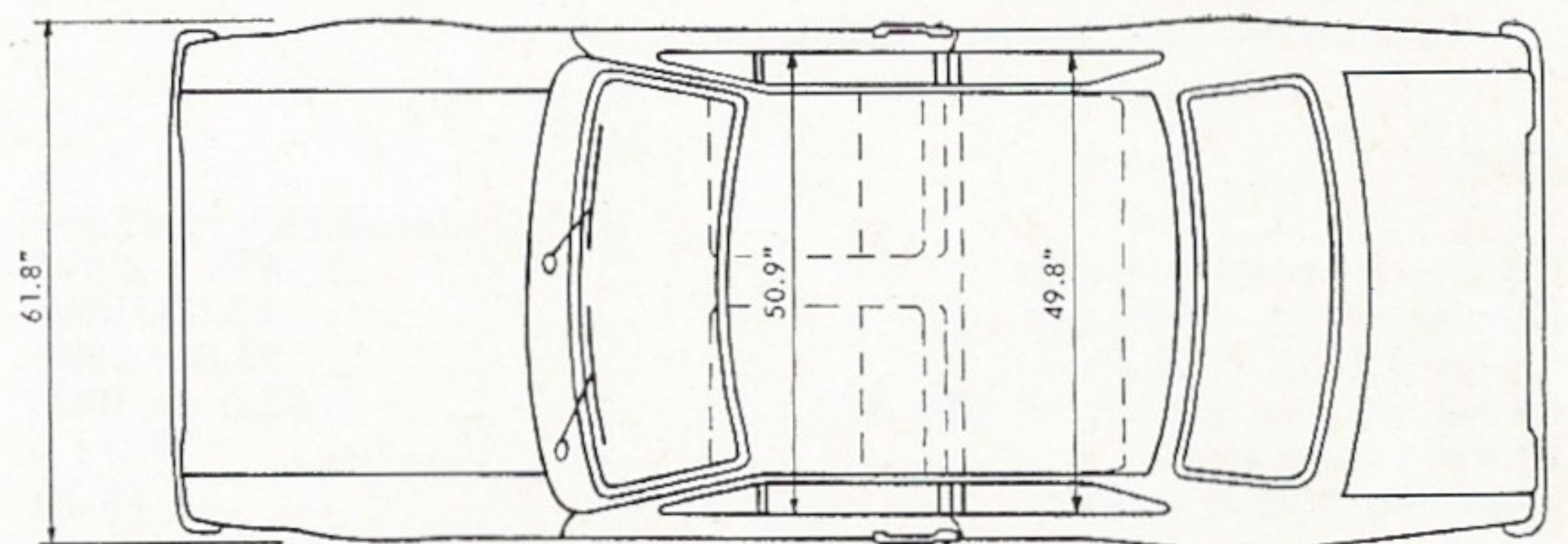
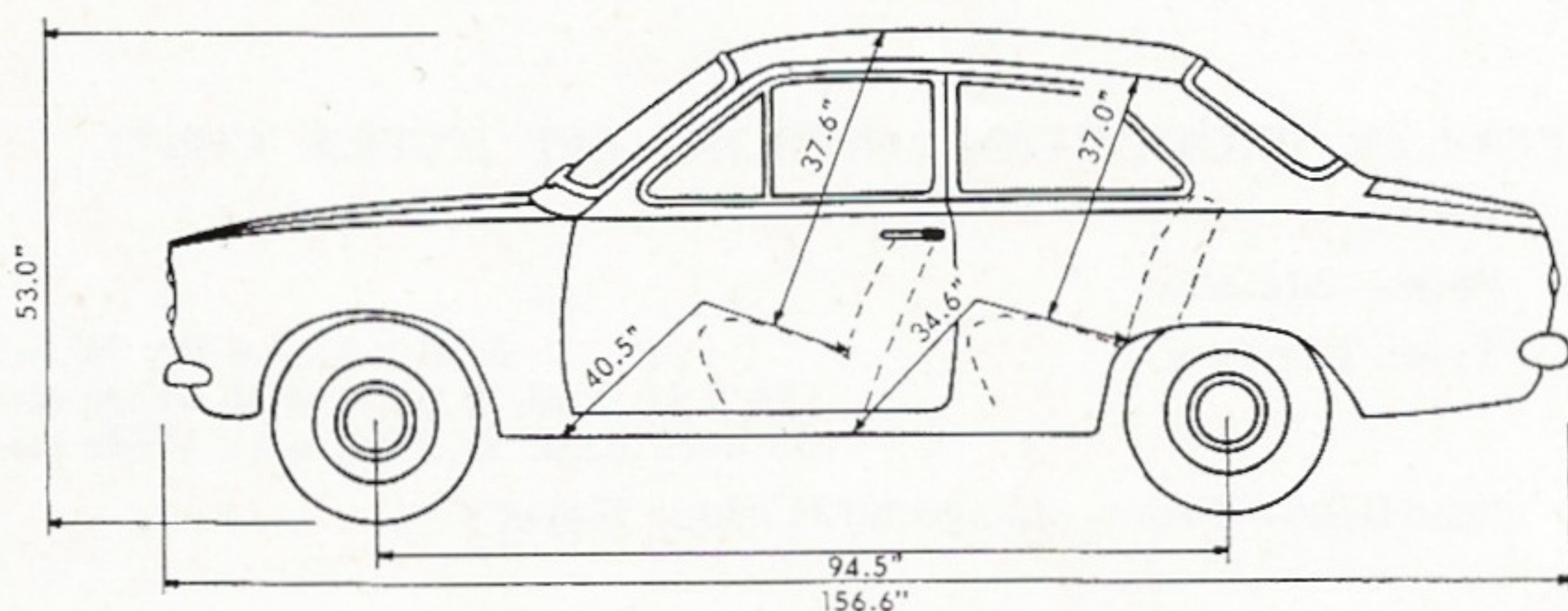


DIRECTORS: F. H. FERREIRA, G. R. GRAVES, H. E. JONES (U.S.A.), JOHN SAGOVAC (CANADA), K. E. SCOTT (U.S.A.), R. J. SCOTT, MANAGING (U.S.A.).

ESCORT DELUXE SEDAN



The Escort de Luxe offers an ideal combination of space and peppy performance. The power of its 1100 c.c. bowl-in-piston crossflow engine is transmitted via a very snappy four speed all synchromesh gearbox to give it acceleration, economy and top speed unmatched by its competitors.



FORD MOTOR COMPANY OF SOUTH AFRICA (PTY.) LIMITED

ESCORT DELUXE SEDAN

SPECIFICATIONS

KERB WEIGHT (APPROX.) LBS.	FRONT 883	REAR 758.5	TOTAL 1641.5
G.V.W. 2546	PAYLOAD 904.5		

AXLE, FRONT

Type McPherson, Independent Coil Springs, Mounted on Hydraulic Double Acting Shock Absorbers. Track Control Arms and Compression Tie Bars.

AXLE, REAR

Type Hypoid Semi-Floating—Pressed Steel Banjo
Ratio 3.9
Capacity—Pints 1.5

BRAKES, SERVICE

Type Dual Line Hydraulic, Visual Master Cylinder
Front Drum—Internal Expanding, Two Leading Shoe, Dual Cylinder Girling.
Rear Drum—Internal Expanding, Single Leading Shoe, Single Cylinder Girling.
Front Brakes—(Drum Diam. x Lining Width)—inches 8.0 x 1.50
Rear Brakes—(Drum Diam. x Lining Width)—inches 8.0 x 1.50
Total Area (Lining)—sq. inches 75.44

BRAKES, PARKING

Type Mechanical Cable Operated on Rear Wheels

BUMPERS

Front Chrome, Full Width
Rear Chrome, Full Width

CLUTCH

Type Cable Operated, Semi-centrifugal, Single Dry Plate, Diaphragm Spring.
Diameter—inches 6.5
Total Frictional Area—sq. inches 34.56
Release Bearing Pre-Lubricated

COOLING SYSTEM

Capacity—Pints (without Heater) 7.9
Radiator Fin and Tube Pressure Cap
Fan—No. of Blades—Diameter inches 10—12.0
Capacity—Pints (with Heater) 9.0

DRIVE LINE

Type Hotchkiss
Propeller Shaft No. 1
Universal Joints Needle Roller

ELECTRICAL SYSTEM

Battery 12v. 38 A.H. 54 Plate
Generator 22 Amp.
Ignition—Coil, Distributor Mechanical/Vacuum Advance, Parking/Flasher Indicators, Stop/Brake Lamps, Sealed Beam Headlamps, Instrument and Interior Lights.

ENGINE

Type 4 Cylinder O.H.V. In Line
Bore and Stroke—inches 3.1878 x 2.098
Displacement—inches (c.c.) 67.0 (1098)
Gross B.H.P. @ R.P.M. 53.0 x 5500
Gross Torque @ R.P.M. (lbs./ft.) 62.0 @ 3000
Compression Ratio 9.0 : 1
Licensing Horse Power 16.26

FUEL SYSTEM

Fuel Pump Mechanical
Carburettor Single Venturi—Down Draught
Choke Hand, Cable Operated
Fuel Filter Gauze Screen in Pump
Air Cleaner Dry Paper Element
Tank Capacity—Gallons 9.0

LUBRICATION

Engine: Full Pressure Feed to Main, Big End and Camshaft Bearings
Crankcase Capacity—Pints (with Filter) 6.4
Oil Filter Renewable Element—Full Flow

SHOCK ABSORBERS

Front Hydraulic Double Acting Telescopic
Rear Hydraulic Double Acting Telescopic

SPRINGS

Front Helical Coil
Rear Longitudinal Leaf—Semi-Elliptic

STEERING

Type Rack and Pinion
Ratio 16.5 : 1
Steering Wheel—Diameter inches 15.0
No. Wheel Turns Lock to Lock 2.81/2.95
Turning Circle (Kerb to Kerb)—Feet 29.0
Capacity—Pints 0.25

TRANSMISSION

Type 4 Speed Synchromesh Remote Centre Floor Gear Shift.
Synchromesh All Forward Gears
Gear Positions First Second Third Fourth Reverse
Ratios 3.656 2.185 1.425 1.000 4.235
Capacity—Pints 1.5

WHEELS

Type Steel Disc, Wide Base Rims
Rim Size 12.0 x 3.50 C

TYRES

Standard Tubeless 5.50 x 12—4 Ply B.S.W.

REGULAR PRODUCTION OPTIONS (AT EXTRA COST)

Heater
Paint—Metallic
Tyres Tubeless 5.50 x 12—4 Ply W.S.W.
155 x 12 Rad. B.S.W. with Wide Rims
155 x 12 Rad. W.S.W. with Wide Rims
Seat Belts—Front—Diagonal (Colour Keyed)

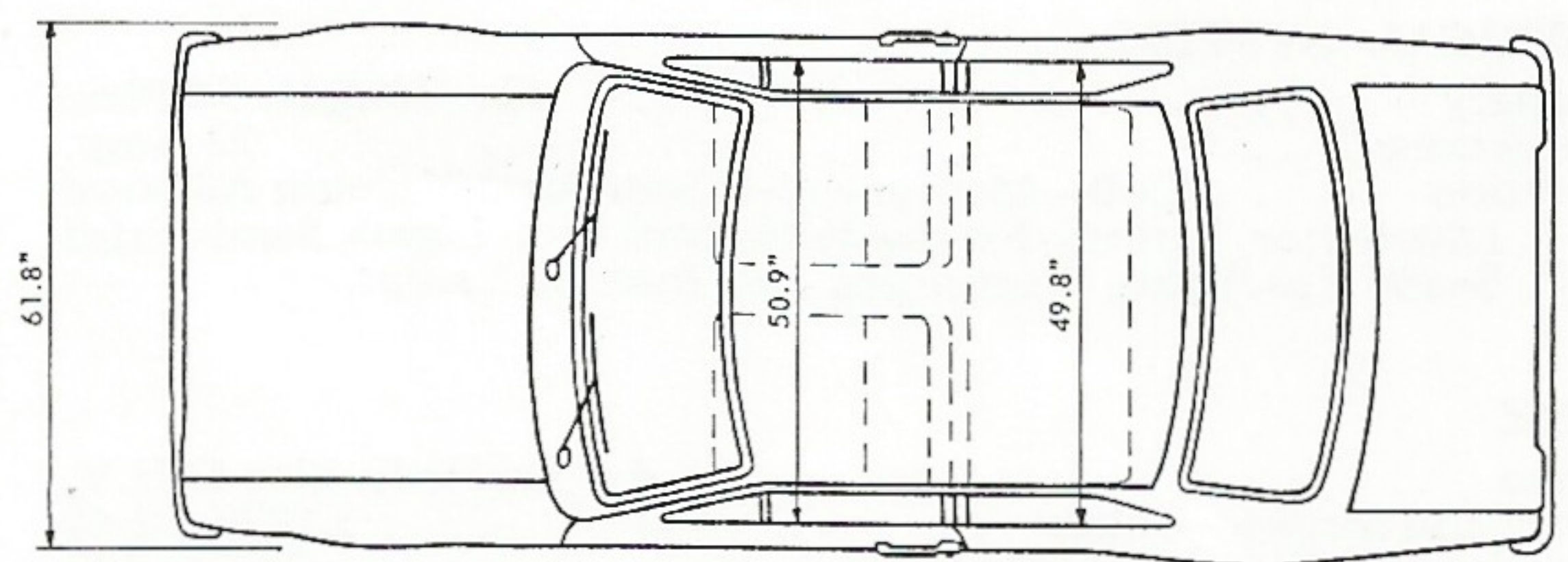
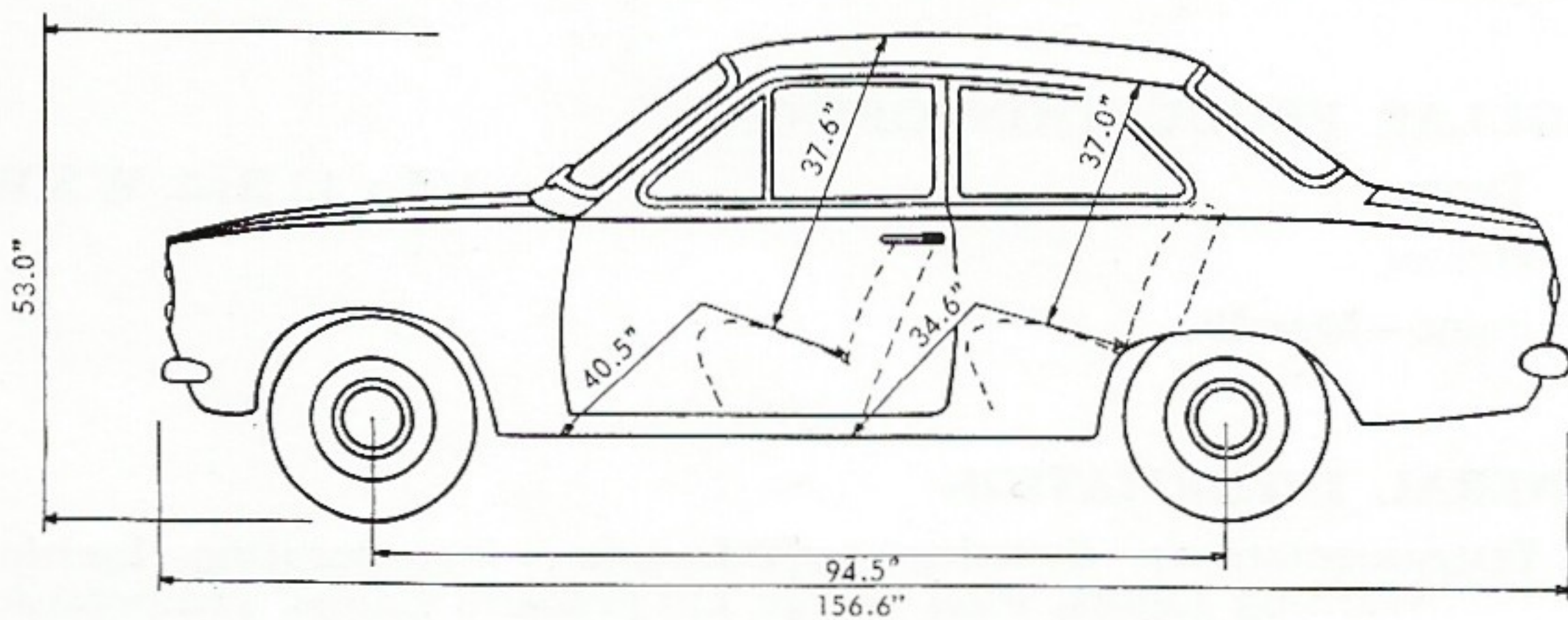
These specifications were in effect at the time this leaflet was approved for printing. Ford Motor Company of South Africa (Pty.) Limited, whose policy is one of continuous improvement, reserve the right, however, to discontinue or change at any time, specifications, design or prices, without notice and without incurring any obligation to purchasers.

DIRECTORS: F. H. FERREIRA, G. R. GRAVES, H. E. JONES (U.S.A.), JOHN SAGOVAC (CANADA), K. E. SCOTT (U.S.A.), R. J. SCOTT, MANAGING (U.S.A.).

ESCORT G.T.



The sporty appearance of the Escort G.T. is endorsed by the car's peppy performance. Its engine is fitted with a Weber 2 barrel carburettor and develops 75 Brake Horse Power. Full instrumentation is standard.



FORD MOTOR COMPANY OF SOUTH AFRICA (PTY.) LIMITED

ESCORT G.T.

SPECIFICATIONS

KERB WEIGHT (APPROX.) LBS.	FRONT 958	REAR 810	TOTAL 1768
G.V.W. 2646	PAYLOAD 878		

AXLE, FRONT
Type .. McPherson, Independent Coil Springs, Mounted on Double Acting Shock Absorbers, Track Control Arms and Stabilizer Bar.

AXLE, REAR
Type .. Hypoid Semi-Floating—Conventional Banjo Type Housing
Ratio .. 4.125:1
Capacity—Pints .. 1.5

BRAKES, SERVICE
Type .. Servo Assisted, Dual Line Hydraulic, Visual Master Cylinder.
Front Type .. Disc Type, Self-Adjusting
Disc Diameter—inches .. 8.6
Front Swept Area (sq. ins.) .. 143.5
Rear Type .. Drum Single Cylinder, Single Leading Shoe
Drum Diameter—inches .. 8.00
Rear Swept Area—sq. inches .. 75.44
Front and Rear Total Swept Area .. 218.94

BRAKES, PARKING
Type .. Mechanical Cable Operated on Rear Wheels

BUMPERS
Front .. Chrome, Full Width
Rear .. Chrome, Full Width

CLUTCH
Type .. Cable Operated, Single Dry Plate, Diaphragm Spring
Diameter—inches .. 7.54
Total Frictional Area—sq. inches .. 44.17
Release Bearing .. Pre-Lubricated

COOLING SYSTEM
Capacity—Pints (without Heater) .. 7.9
Radiator .. Fin and Tube, Pressure Cap
Fan—No. of Blades—Diameter inches .. 10—12.0
Capacity—Pints (with Heater) .. 9.0

DRIVE LINE
Type .. Hotchkiss
Propellor Shaft No. .. 2
Universal Joints .. Needle Roller

ELECTRICAL SYSTEM
Battery .. 12v. 38 A.H. 54 Plate
Generator .. 22 Amp.
Ignition .. Coil—Mechanical—Centrifugal/Vacuum Advance
Distributor, Parking/Flasher Indicators, Stop Lights, Semi-sealed Beam Headlights, Instrument and Interior Lamps.

ENGINE
Type .. 4 Cylinder In Line O.H.V.
Bore and Stroke—inches .. 3.1878 x 2.48
Displacement—cubic inches (c.c.) .. 79.2 (1298)
Gross B.H.P. @ R.P.M. .. 75.0 @ 6000
Gross Torque @ R.P.M. (lbs./ft.) .. 74.5 @ 4300
Compression Ratio .. 9.2 : 1
Licensing Horse Power .. 16.25

FUEL SYSTEM
Fuel Pump .. Mechanical
Carburettor .. Weber 2 Barrel Compound
Choke .. Hand, Cable Operated
Fuel Filter .. Gauze Screen in Pump
Air Cleaner .. Dry Replaceable Element
Tank Capacity—Gallons .. 9.0

LUBRICATION
Engine: Full Pressure Feed to Main, Conrod, Camshaft Bearings and Timing Gears.
Crankcase Capacity—Pints (with Filter) .. 6.4
Oil Filter .. Renewable Element—Full Flow

SHOCK ABSORBERS
Front .. Special Telescopic Hydraulic Double Acting
Rear .. Double Acting Telescopic

SPRINGS
Front .. Helical Coil
Rear .. Longitudinal Leaf—Semi-Elliptic

STEERING
Type .. Rack and Pinion
Ratio .. 16.5:1
Steering Wheel—Diameter inches .. 15.0
No. Wheel Turns Lock to Lock .. 2.81/2.95
Turning Circle (Kerb to Kerb)—Feet .. 29.0
Capacity—Pints .. 0.25

TRANSMISSION
Type .. 4 Speed Synchromesh Remote Control Centre Floor Shift
Synchromesh .. First, Second, Third, Top
Gear Positions .. First Second Third Top Reverse
Ratios .. 3.337 1.995 1.418 1.000 3.867
Capacity—Pints .. 1.5

WHEELS
Rim Size .. 12 x 4.5 C

TYRES
Standard .. 155 x 12 Rad. B.S.W.

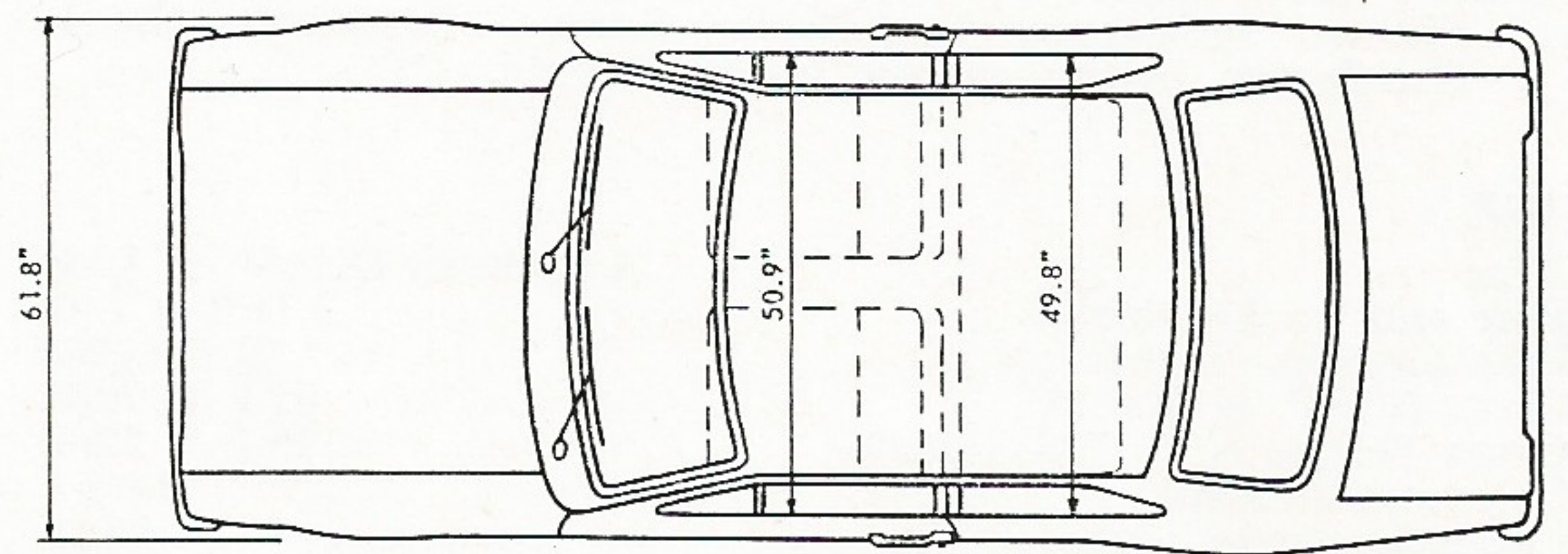
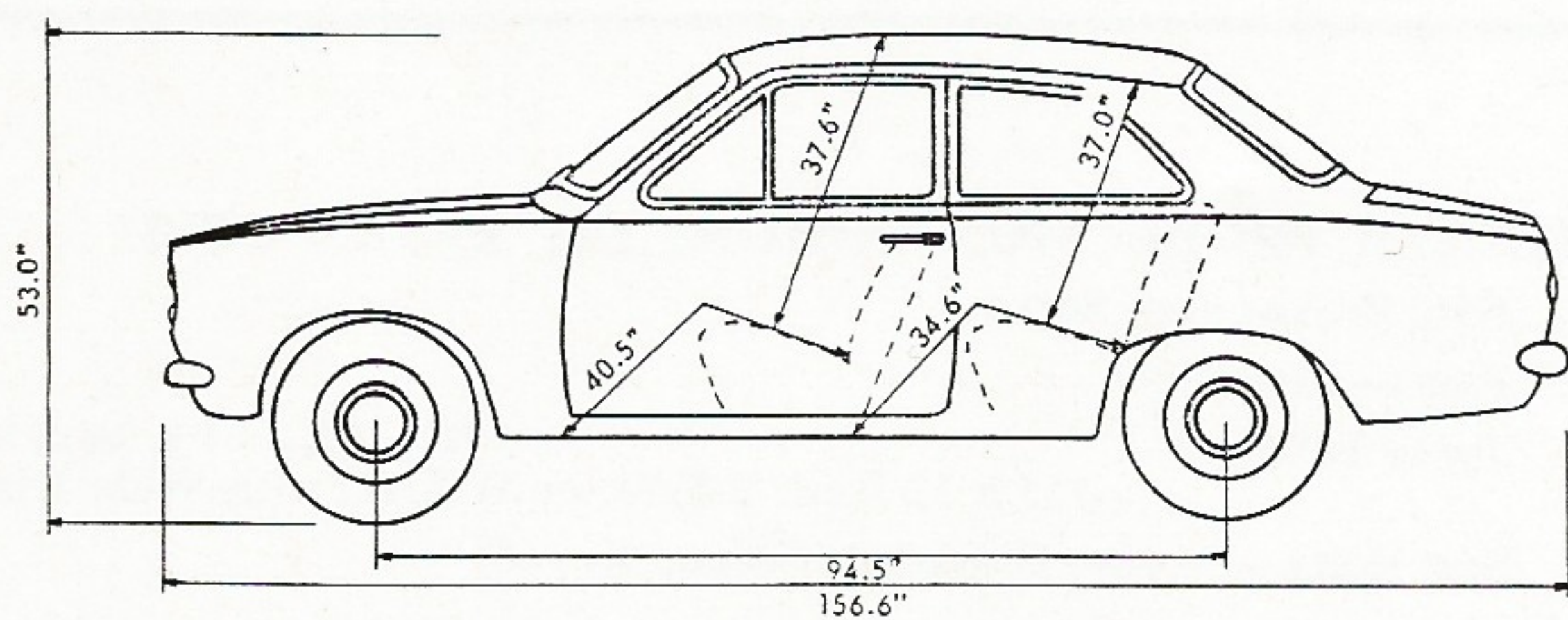
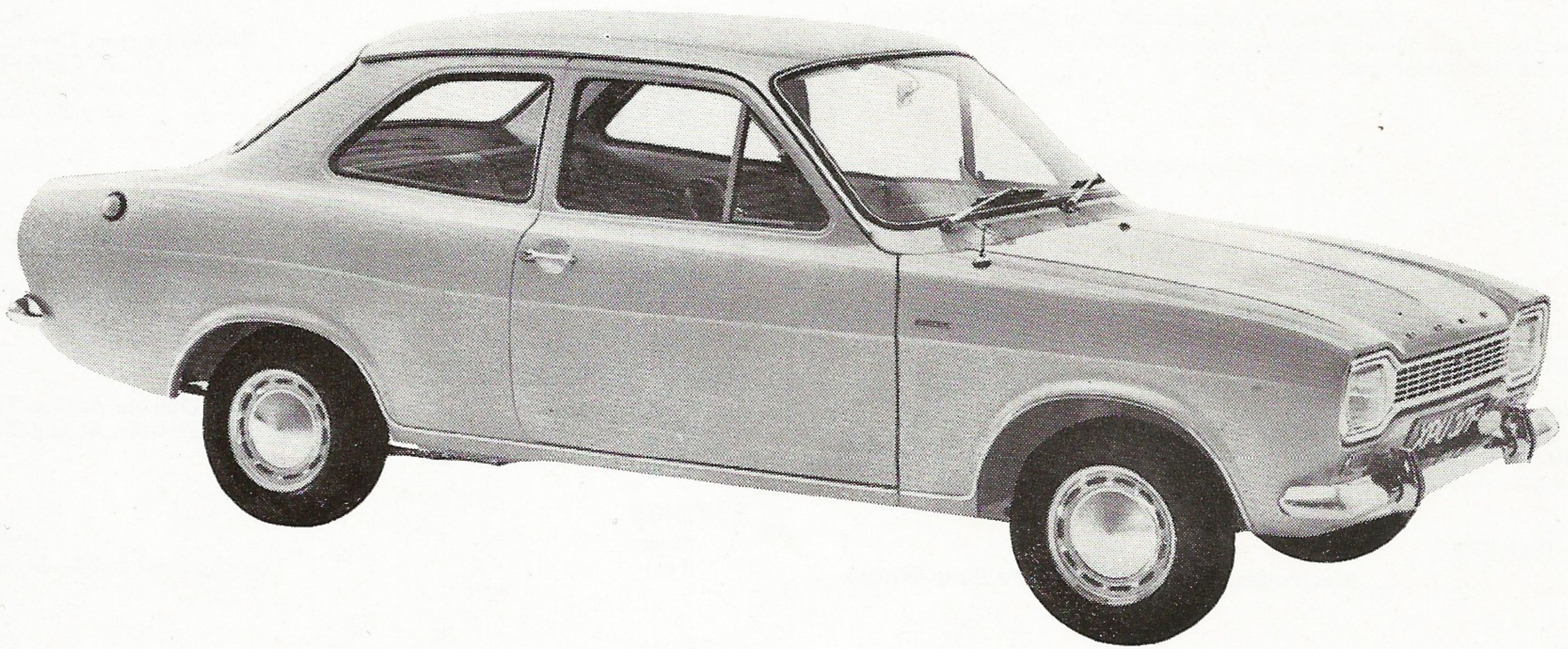
REGULAR PRODUCTION OPTIONS
Tyres .. 155 x 12 Rad. W.S.W.
Heater
Paint—Metallic

GENERAL INFORMATION
Instrumentation: Speedometer/Odometer, incorporating Ignition Warning Lights, Fuel Gauge, Oil Pressure Gauge, Temperature Gauge and Battery Condition Indicator. Tachometer with warning light for main beam.
“G.T.” badges fitted to sides, front fenders.

These specifications were in effect at the time this leaflet was approved for printing. Ford Motor Company of South Africa (Pty.) Limited, whose policy is one of continuous improvement, reserve the right, however, to discontinue or change at any time, specifications, design or prices, without notice and without incurring any obligation to purchasers.

DIRECTORS: F. H. FERREIRA, G. R. GRAVES, H. E. JONES (U.S.A.), JOHN SAGOVAC (CANADA), K. E. SCOTT (U.S.A.), R. J. SCOTT, MANAGING (U.S.A.).

ESCORT SUPER



FORD MOTOR COMPANY OF SOUTH AFRICA (PTY.) LIMITED

ESCORT SUPER

SPECIFICATIONS

KERB WEIGHT (APPROX.) LBS.		FRONT 903		REAR 770.8		TOTAL 1673.8	
G.V.W. 2546		PAYLOAD 872.2					
<hr/>							
AXLE, FRONT							
Type	McPherson, Independent Coil Springs, Mounted on Hydraulic Double Acting Shock Absorbers, Track Control Arms and Compression Tie Bars.						
AXLE, REAR							
Type	Hypoid Semi-Floating—Pressed Steel Banjo						
Ratio	3.9 : 1						
Capacity—Pints	1.5						
BRAKES, SERVICE							
Type	Dual Line Hydraulic—Visual Master Cylinder						
Front	Drum—Internal Expanding, Two Leading Shoe, Dual Cylinder Girling.						
Rear	Drum—Internal Expanding, Single Leading Shoe, Single Cylinder Girling.						
Front Brakes—(Drum Diam. x Lining Width)—inches	8.0 x 1.75						
Rear Brakes—(Drum Diam. x Lining Width)—inches	8.0 x 1.50						
Total Area—(Lining)—sq. inches	81.72						
BRAKES, PARKING							
Type	Mechanical Cable Operated on Rear Wheels						
BUMPERS							
Front	Chrome, Full Width						
Rear	Chrome, Full Width						
CLUTCH							
Type	Cable Operated, Semi-Centrifugal, Single Dry Plate, Diaphragm Spring.						
Diameter—Inches	7.54						
Total Frictional Area—sq. inches	44.17						
Release Bearing	Pre-Lubricated						
COOLING SYSTEM							
Capacity—Pints (with Heater)	9.0						
Radiator	Fin and Tube Pressure Cap						
Fan—No. of Blades—Diameter inches	10—12.0						
DRIVE LINE							
Type	Hotchkiss						
Propellor Shaft No.	1						
Universal Joints	Needle Roller						
ELECTRICAL SYSTEM							
Battery	12v. 38 A.H. 54 Plate						
Generator	22 Amp.						
Ignition—Coil, Distributor, Mechanical/Vacuum Advance, Parking/Flasher Indicators, Stop/Brake Lamps, Semi-sealed Beam Headlamps, Instrument and Interior Lights.							
ENGINE							
Type	4 Cylinder O.H.V. In Line						
Bore and Stroke—inches	3.1878 x 2.48						
Displacement—inches (c.c.)	79.2 (1298)						
Gross B.H.P. @ R.P.M.	61.5 @ 5000						
Gross Torque @ R.P.M. (lbs./ft.)	75.5 @ 2500						
Compression Ratio	9.0 : 1						
Licensing Horse Power	16.26						
FUEL SYSTEM							
Fuel Pump	Mechanical						
Carburettor	Single Venturi Down Draught						
Choke	Hand, Cable Operated						
Fuel Filter	Gauze Screen in Pump						
Air Cleaner	Dry Paper Element						
Tank Capacity—Gallons	9.0						
LUBRICATION							
Engine: Full Pressure Feed to Main, Big End and Camshaft Bearings							
Crankcase Capacity—Pints (with Filter)	6.4						
Oil Filter	Renewable Element—Full Flow						
SHOCK ABSORBERS							
Front	Hydraulic Double Acting Telescopic						
Rear	Hydraulic Double Acting Telescopic						
SPRINGS							
Front	Helical Coil						
Rear	Longitudinal Leaf—Semi-Elliptic						
STEERING							
Type	Rack and Pinion						
Ratio	16.5 : 1						
Steering Wheel—Diameter inches	15.0						
No. Wheel Turns Lock to Lock	2.81/2.95						
Turning Circle Feet (Kerb to Kerb)	29.0						
Capacity—Pints	0.25						
TRANSMISSION							
Type	4 Speed Synchromesh Remote Centre Floor Gear Shift						
Synchromesh	All Forward Gears						
Gear Positions	First	Second	Third	Fourth	Reverse		
Ratios	3.656	2.185	1.425	1.000	4.235		
Capacity—Pints	1.5						
WHEELS							
Type	Steel Disc, Wide Base Rims						
Rim Size	12 x 3.50 C						
TYRES							
Standard	5.50 x 12—4 Ply B.S.W.						
<hr/>							
REGULAR PRODUCTION OPTIONS (AT EXTRA COST)							
Disc Brakes with Servo							
Paint—Metallic							
Tyres Tubeless 5.50 x 12—4 Ply W.S.W.							
155 x 12 Rad. B.S.W. or W.S.W. with Wide Rims							
Seat Belts—Front—Diagonal (Colour Keyed)							

These specifications were in effect at the time this leaflet was approved for printing. Ford Motor Company of South Africa (Pty.) Limited, whose policy is one of continuous improvement, reserve the right, however, to discontinue or change at any time, specifications, design or prices, without notice and without incurring any obligation to purchasers.

DIRECTORS: F. H. FERREIRA, G. R. GRAVES, H. E. JONES (U.S.A.), JOHN SAGOVAC (CANADA), K. E. SCOTT (U.S.A.), R. J. SCOTT, MANAGING (U.S.A.).